

MS Office IntraLogic Add-In

Release Notes

Weblogics is pleased to announce the release of a new module designed to make saving documents directly from the MS Office environment into IntraLogic quick and easy.

Microsoft Office IntraLogic Add-in:

The MS Office IntraLogic Add-in is a program that resides on the user's PC or Notebook and automatically modifies the Microsoft Office toolbar to provide full IntraLogic integration. It is used to integrate the process of saving files and registering documents in IntraLogic.

Now, when saving documents, just click on the button on your toolbar and the Add-in will lead the user through registering the document correctly, i.e. completing metadata and selecting the community filter. The Microsoft Office IntraLogic Add-in is a separate product that you install on each user's PC/notebook. It is compatible with IntraLogic V8 and Blueprint V8.

Operating environment:

The MS Office IntraLogic Add-in operates in either the Window XP or the Vista operating environments and is compatible with either Microsoft Office 2003 or Microsoft Office 2007. It will be developed in the future to remain compatible with future Microsoft Office releases.

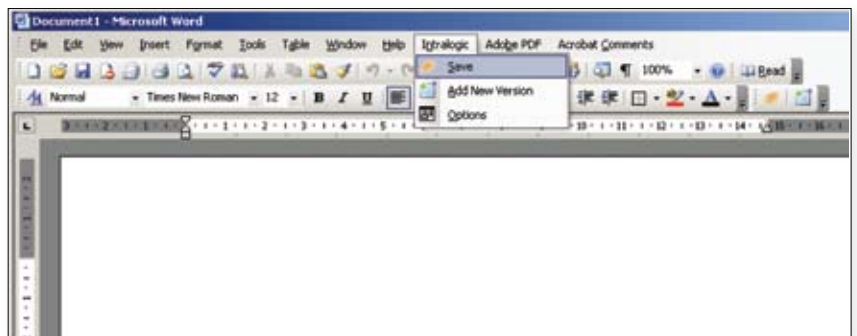


Figure 1 - Typical Home Page

It supports each of the following MS Office products:-

- Microsoft Word
- Microsoft Excel
- Microsoft Publisher
- Microsoft PowerPoint

The software operates in either standard local hosting or remote hosting environments (For SAS clients, documents can be saved directly from your local desktop to the remote host). There are no plans to extend the software to other products or operating environments at this stage.

Cost and ordering:

The MS Office IntraLogic Add-in is provided as a site license (unlimited usage) for \$1,000.00. To order please contact Allison Glavin at Weblogics Australia. She will arrange a download. You will also be registered for future upgrades. The software is provided on a trust basis (without contract). The Software comes with an installation guide.

Availability:

The MS Office IntraLogic Add-in is available from 21st April 2009. It is provided as a self-install item and needs no pre-requisites apart from MS Office as stated above in a MS Windows environment. The software is installed on each PC/notebook directly from the media. It can easily be uninstalled.

Support:

The MS Office IntraLogic Add-in is provided on a self-install / self support basis. It is the client's responsibility to install the software and train users in its use (very easy!). Because this Add-in sits within MS Applications on the end-user's computer in the client's environment, Weblogics cannot offer support and this is not provided under the Weblogics Software License Agreement.